



SHILEY EYE CENTER

UC SAN DIEGO



**Continuing Medical Education
and
Community Lecture Series
2014-2015**



Dear Colleagues,

The Shiley Eye Center and UC San Diego Department of Ophthalmology's Continuing Medical Education Programs for 2014-2015 should be better than before and we cordially invite you to participate.

Highlights for the year include:

- Every Monday evening, we host weekly Grand Rounds with interesting case presentations and stimulating discussion.
- Monthly, we offer the Ophthalmology Community Lecture Series with visiting professors presenting. Prominent specialists and leaders from around the country will update you on the latest in ophthalmic treatments and techniques.
- After a very successful first year, Shiley continues the Vision Research Seminar Series featuring both faculty and guest lecturers.
- February 14 – 15, 2015, we will be hosting our annual Ophthalmology Update.
- On May 18, 2015, we will hold our Annual Residents and Fellows Research Day. Residents and fellows will present their research along with an "ARVO Wrap-Up" where the latest vision research from the meeting will be highlighted.

You are welcome to attend any of these educational activities. Please contact Karen Anisko Ryan (kanisko@ucsd.edu or 858-534-8017) for any further information. You can also check our website at www.shileyeye.org for details of the dates and times. We look forward to seeing you.

Sincerely,

Robert N. Weinreb, M.D.

Chairman & Distinguished Professor of Ophthalmology
Director, Shiley Eye Center

Natalie A. Afshari, M.D.

Chief, Division of Cornea and Refractive Surgery
Director of Education



Grand Rounds



Weekly Grand Rounds

Location:

Shiley Eye Center Conference Room
9415 Campus Point Drive
La Jolla, CA 92037

Shiley weekly Grand Rounds consist of case presentations with moderated discussion of eye diseases, treatment dilemmas and surgical challenges.

Please join the Shiley Eye Center faculty, residents and fellows for this great learning experience.

Grand Rounds Dates

Mondays 5:00pm - 6:00pm

September 15, 2014
September 22, 2014
September 29, 2014

October 13, 2014
October 27, 2014

November 17, 2014

December 1, 2014
December 15, 2014

January 12, 2015
January 26, 2015

February 2, 2015
February 9, 2015

March 16, 2015
March 30, 2015

April 13, 2015
April 20, 2015
April 27, 2015

May 4, 2015

Community Lecture Series

September 8, 2014

External Ocular Disease & Corneal Surgery

Thomas J. Liesegang, M.D.
Mayo Clinic Health System
Louis and Evelyn Krueger
Professor in Ophthalmology



March 9, 2015

Ocular Oncology

Joan M. O'Brien, M.D.
Chair, Dept. of Ophthalmology
Director, Scheie Eye Institute
Professor of Ophthalmology
Penn Presbyterian Medical Center



October 6, 2014

Vitreoretinal Diseases & Surgery

John Timothy Stout, M.D.
Chair, Dept. of Ophthalmology
Alkek Eye Center
Baylor College of Medicine



April 6, 2015

Infectious & Inflammatory Eye Disease

Todd P. Margolis, M.D., Ph.D.
Distinguished Professor & Chairman
Washington University in St. Louis
Dept. of Ophthalmology



November 3, 2014

Vitreous Retinal Diseases

Mark S. Blumenkranz, M.D.
Professor & Chairman
Stanford University SOM
Dept. of Ophthalmology
Byers Eye Institute at Stanford



May 11, 2015

Glaucoma

Douglas Rhee, M.D.
Chair, Dept. of Ophthalmology
UH Case Medical Center
Visiting Professor, CWRU SOM
Director, Eye Institute, University Hospitals



December 8, 2014

Glaucoma

Joel S. Schuman, M.D.
Director, UPMC Eye Center
Professor & Chair, Dept. of Ophthalmology
University of Pittsburgh Schools of the Health Sciences



June 1, 2015

Glaucoma

Donald L. Budenz, M.D., M.P.H.
Kittner Family Professor and Chairman
University of North Carolina SOM
UNC Kittner Eye Center



January 12, 2015

Retina & Vitreous

David W. Parke II, M.D.
Executive Vice President & CEO
American Academy of Ophthalmology



Community Lecture Series presentations are held at the Goldberg Auditorium in the Moores Cancer Center. Located at 3855 Health Sciences Drive, 2nd floor, La Jolla, CA 92037 (see back for directions).

5:00pm - 6:00pm Case Presentations
6:00pm - 6:45pm Lecture
Reception to follow

2015 OPHTHALMOLOGY UPDATE

February 14-15, 2015

An interdisciplinary faculty of ophthalmic sub-specialties will review the continuing progress in: Cataract and Refractive Surgery, Glaucoma, Retina, Neuro-Ophthalmology, Oculoplastics, Ocular Surface Disease, Cornea and Oncology.

Chairs:

Don O. Kikkawa, M.D.
Robert N. Weinreb, M.D.

Location:

Hilton La Jolla Torrey Pines
10950 North Torrey Pines Road
La Jolla, CA 92037
(858) 558-1500



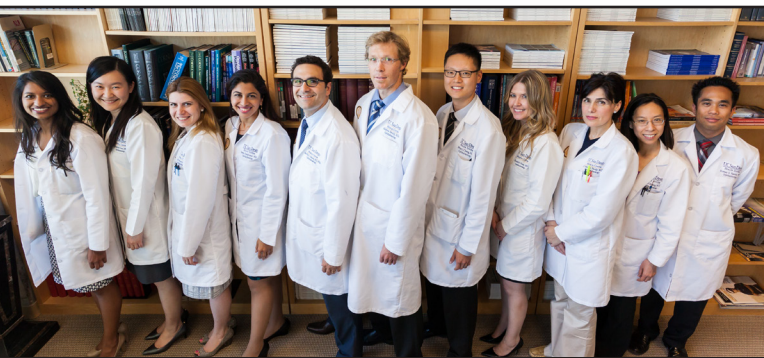
Residents & Fellows Annual Research Day

Monday, May 18, 2015

3:00pm - 6:00pm Research Presentations
6:00pm Reception

The Shiley Eye Center's Residents and Fellows Annual Research Day provides an opportunity for residents, fellows, and faculty alike to present and review the outstanding research being conducted in the Department throughout the year. Applications of research to clinical practice are emphasized. Current and newly developing management and diagnosis in each ophthalmic discipline are highlighted.

Following the talks, poster presentations during the reception provide an opportunity to review the research presented by the department at ARVO and other premier national meetings.



Location:
Shiley Eye Center Conference Room
9415 Campus Point Drive
La Jolla, CA 92037

For more information or to see Shiley's calendar of events visit www.shileyeye.org select "Continuing Medical Education," then select "View Upcoming Lectures".

Vision Research Seminar Series



The Vision Research Series addresses the latest advancements in vision science and clinical ophthalmology. Each presentation features UC San Diego's Department of Ophthalmology faculty, as well as a selection of premier vision scientists from around the country and internationally.

Visit our website at www.shileyeye.org for a list of presenters and dates.

Location:
Shiley Eye Center Conference Room
9415 Campus Point Drive
La Jolla, CA 92037



Robert N. Weinreb, M.D.

Distinguished Professor and Chairman

Comprehensive

Jeffrey E. Lee, M.D.

Cornea & Refractive Surgery

Natalie A. Afshari, M.D.

Stuart I. Brown, M.D.

Weldon W. Haw, M.D.

Chris W. Heichel, M.D.

Jiagang Zhao, Ph.D.

Glaucoma

Akram Belghith, Ph.D.

Christopher J. Bowd, Ph.D.

Jeffrey L. Goldberg, M.D., Ph.D.

Andrew D. Huberman, Ph.D.

Won-Kyu Ju, Ph.D.

James D. Lindsey, Ph.D.

John H.K. Liu, Ph.D.

Felipe Medeiros, M.D., Ph.D.

Robert N. Weinreb, M.D.

Siamak Yousefi, Ph.D.

Linda M. Zangwill, Ph.D.

Neuro-Ophthalmology

Peter J. Savino, M.D.

**Oculofacial Plastic
& Reconstructive Surgery**

Don O. Kikkawa, M.D.

Bobby S. Korn, M.D., Ph.D.

Ophthalmic Pathology

Jonathan H. Lin, M.D., Ph.D.

Pediatric Ophthalmology & Strabismus

David B. Granet, M.D.

Shira L. Robbins, M.D.

Retina & Vitreous

Radha Ayyagari, Ph.D.

Dirk-Uwe G. Bartsch, Ph.D.

Lingyun Cheng, M.D.

Napoleone Ferrara, M.D.

Henry A. Ferreyra, M.D.

William R. Freeman, M.D.

Michael H. Goldbaum, M.D.

Massoud Khraiche, Ph.D.

Eric Nudleman, M.D., Ph.D.

Peter Shaw, M.Sc., Ph.D.

Gabriel A. Silva, Ph.D.

Kang Zhang, M.D., Ph.D.

Directions

Directions to the Shiley Eye Center:

From I-5: Exit on Genesee Avenue and head east to Campus Point Drive. Turn right onto Campus Point Drive and then turn right on Medical Center Drive at the stop sign. Turn left into parking lot P751. The Shiley Eye Center is located east of the parking lot.

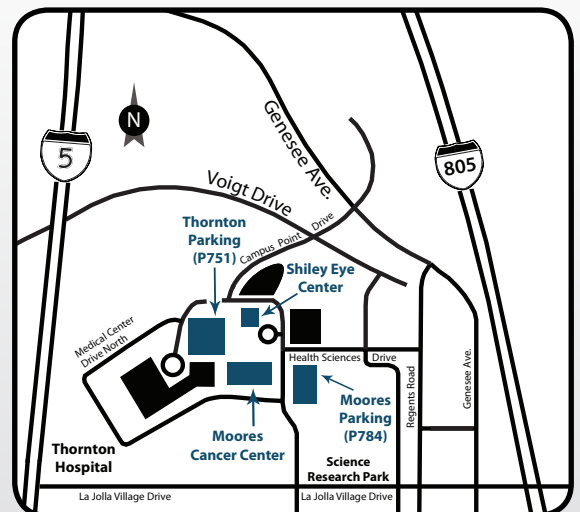
From I-805: Exit La Jolla Village Drive and go west. Turn right on Regents Road. Turn left on Health Sciences Drive and turn right on Medical Center Drive. Turn left into parking lot P751 the Shiley Eye Center is located east of the parking lot.

The Shiley conference room is located outside the west side of the Shiley Eye Center.

Directions to the Goldberg Auditorium at the Moores Cancer Center:

From I-5: Exit on Genesee Avenue and head east to Campus Point Drive. Turn right onto Campus Point Drive and then turn left on Medical Center Drive at the stop sign. Turn left onto Health Sciences Drive at stop sign. Turn right into parking lot P784.

From I-805: Exit La Jolla Village Drive and go west. Turn right on Regents Road. Turn left on Health Sciences Drive. Turn left into parking lot P784.





SHILEY EYE CENTER

UC SAN DIEGO

For more information regarding the Shiley Eye Center's community lecture series, weekly grand rounds, and/or other Shiley events please contact:

Karen Anisko Ryan
Director, Business Development &
Communications
Phone: (858) 534-8017
Email: kanisko@ucsd.edu

You can also visit us online at:
www.shileyeye.org

An up-to-date calendar of events can be found on our website under "Continuing Medical Education". Select "View Upcoming Lectures" on the right margin.